

VOICES

A publication of
 **CENTRAL SINGAPORE**
COMMUNITY DEVELOPMENT COUNCIL

OF CENTRAL SINGAPORE

Issue No.31 Nov/Dec 2006 ISSN. 0219-6344

FREE

Walk The Heritage

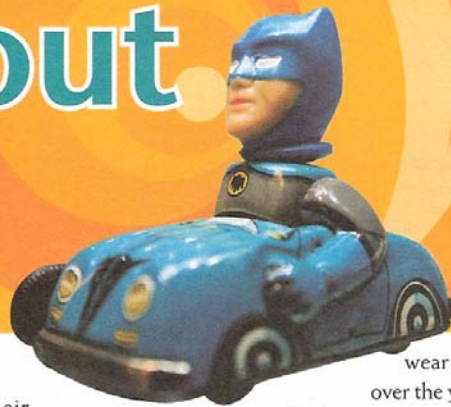
Central Singapore District looks forward to a new year ahead!

Finding hope through baking
烘焙出希望

Mencari Harapan Dengan Membuat Kek
'பேக்கிங்' வழி வாழ்வில் நம்பிக்கை!

Hey Kiddo! There's a *kid* in me, what about YOU?

By Delfina Kellettsze



A trip to Mint Museum of Toys certainly brought back fond memories. I felt like Alice in Wonderland. Now, allow me to entice you as I walk you through my Moment of Imagination and Nostalgia with Toys!

At Collectables on level two, you will find Swimming Tarzan, a pre-war Japanese toy made in the 1930's, the only piece known to exist in mint condition. Other popular exhibits are a Beatles collection from the 1960's including a framed photograph with signatures of the fab four and a Mickey Mouse Range, with a rare coiled tail version of the 1930's German made Mickey Mouse organ grinder known as Hurdy Gurdy.

What really tugged at my heartstrings were the Door of Hope Mission Dolls. Created in the early 1900's by five missionary women from

Shanghai, the dolls were known for their intricately embroidered clothes and finely carved wooden heads. The missionary women imparted their skills to destitute, illiterate girls so they can make an honorable living. The hand crafted dolls portrayed Chinese people of all ages and classes serve as a reflection of early times. Also on display are Edi dolls, walking dolls from Germany from the 1940's. You can find these and lots more at Childhood Favourites on the third floor.

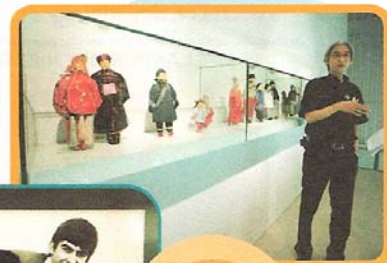
If cartoon and comic book characters are more your thing, then maybe a 1950's Popeye and Olive Tank from Japan, just one of four known to exist in the world, might pique your interest. Or perhaps Tom and Jerry as pals (an infant's toy that would not normally survive the ravages of children,

wear and tear over the years). Be

blown away by Batman Range, a superb collection of much sought after Batman action figures, robots and of course, Batmobiles. Also awaiting you on level four is 8 Man, Japan's earliest cyborg superhero, in its original box.

Head up to level five and be immediately launched into Outerspace. There, you will find the rarest toy robots from Japan, from wind-up to battery-operated, most still in their original boxes. Enlightened to know that robots are operated using battery or keywind. And don't forget to check out the Dan Dare (British science-fiction comic hero created in 1950) waterpistol, only one known to exist in the world!

My adventure ride would never be



possible without curator and avid toy collector, Mr Richard Tan, who gave me the pleasure of a guided tour through the exhibition that spans over 100 years from more than 25 countries. The entire museum is maintained at a cool 21-degrees during operating hours, while strategically placed LED provide an awesome visual spectacle.

A synopsis of the magnificent exhibit, which is believed to be a mere fragment of the owner's entire collection, is inscribed on monoliths in English, Mandarin and Japanese and can be found on all levels. These serve as easy reference should exhibition goers want an overview of the range.

A pair of antistatic gloves and facemask are required each time a toy is taken off the shelf to undergo the "cleaning" process, as it helps to minimize contact with moisture. Indeed a labour of love as this is performed every three to six months. So do be careful when in the museum!

Want to satiate a desire to walk away with something more than just fond memories and a brochure? Step into the Mint Shop, strategically positioned on the ground floor where you purchase tickets to visit the museum. Get ready to "invest" in your dollar's worth as you go about your choice selections.

Satisfied with your purchase, why not have a bite and rest thy feet at the cozy Mint Café, conveniently located at the basement. Have a go at the sinfully delicious Brownie, and enjoy the warm sensation of chocolate fudge melting in your mouth, while the Tiramisu, decorated with shaved chocolate, rum and masala wine, leaves you asking for more.

Mint Museum of Toys
 26 Seah Street, Singapore 188382.
 Tel: 6339 0660
www.emint.com

